

BIGSSSS 2022 Annual Report

Event | September 3, 2022
Graduation Day

People
22 New PhD Fellows

Jan	Dr. Sonja Bastin, BIGSSS postdoc, wins the Pairfam Best Publication Award.	
Feb	Dr. Regina Arant, former BIGSSS PhD Fellow and Postdoc, starts working as Director of Studies. (📖 P. 46)	
Mar	Prof. Dr. Klaus Boehnke, faculty member and former BIGSSS Vice Dean, receives the APA Award for Distinguished Contributions to the International Advancement of Psychology.	
Apr		
May	Audris Umel and Eloisa Harris win the BIGSSS Best Paper Awards. (📖 P. 52)	Prof. Dr. Cornelius Torp and Prof. Dr. Andreas Klee join the BIGSSS faculty. (📖 P. 40–41)
Jun	The first BIGSSS Annual Report is published.	
Jul	BIGSSS is again successful in the DAAD Graduate School Scholarship Program with its GSPSC program to fund two PhD scholars for up to 48 months each. (📖 P. 69)	
Aug	The BIGSSS Summer Retreat for interdisciplinary exchange of the newest PhD cohort and faculty takes place. (📖 P. 60)	
Sep	Prof. Dr. Sonia Lippke, BIGSSS faculty member, receives IAAP Distinguished Scientific Contributions Award.	
Oct	We welcome a new cohort of 22 PhD Fellows. (📖 Pp. 12–37)	Dr. Mandy Boehnke, faculty member and former Director of Studies, becomes University of Bremen's Vice President for Internationalization, Academic Qualification, and Diversity.
Nov	28 Graduates are celebrated at BIGSSS Graduation Day. (📖 P. 62)	Dr. Judith Vey takes up the position as Academic Coordinator. (📖 P. 44)
Dec	Rena Tecklenburg starts her job as Coordinator of Studies. (📖 P. 45)	
	BIGSSS PhD fellows Carina Hartz and Jarina Kühn win bronze medal in 12th Mercator Badminton Challenge Cup of Jacobs University	
	Conference "Intergenerational Inequalities and the Contemporary Family Setup" organized by BIGSSS Fellows takes place. (📖 P. 56)	
	Jacobs University becomes Constructor University.	

BIGSSSS 2022 Annual Report

BIGSSS is an interuniversity cooperation between





Foreword & Acknowledgements

By Dr. Christian Peters, March 2023

It is with pride that I welcome you, dear fellows, alumni, colleagues, and interested parties of BIGSSS, to our second annual report. The past year has been another eventful one, for us as a graduate school, for our international PhD students, and for the world at large. Most importantly, after such a long time, we were able to celebrate our PhD students in September, for their perseverance, for their great scientific work, and for what they have given to our Graduate School over the years. We couldn't do BIGSSS without them. Thank you!

It seems that most of us have integrated the pandemic into our daily lives, but of course we are all still experiencing the aftermath on a regular basis. The big and small changes that challenge us also offer opportunities for new beginnings. Perhaps it is just my personal impression, but the sensitivity for sustainable and climate-friendly research planning has increased enormously since the pandemic. Today, before every conference trip, we ask ourselves whether we really need to emit tons of CO2 by flying, or whether we can't achieve similar results by participating digitally. The resulting impact on the work of BIGSSS is clear, with the number of digital talks and presentations increasing dramatically. Over the coming months, we will need to see what models we can use to get the best results for our PhD students, and how we can best support them.

2022 has also been an eventful year for our training programs. In September, we welcomed a new cohort of the Collaborative Research Centre and the second group of the DAAD GloWel program. As we were once again successful with a proposal for the DAAD GSSP funding, we were able to call for applications for another round and start recruiting new fellows for 2023. By the time this annual report goes to press, the interviews should have taken place, and so far, the globally diverse group of applicants looks very promising.

There have also been some staff changes. Most importantly, BIGSSS finally has an Academic Coordinator at University of Bremen again. Sociologist Dr. Judith Vey, who joined us last summer, is a great asset and has integrated very well into our team in the short time she has been with us. We are also delighted to have with us Rena Tecklenburg as Coordinator of Studies who is replacing our Director of Studies, Dr. Regina Arant, during her parental leave. She has been a great help and a real blessing to our small team.

Finally, I would like to thank my colleague Arline Rave who, for the second year running, has taken over the editorial reins of this report, and even managed to get us to press a few weeks earlier than last year. Thank you for all your time and energy! It remains to be seen whether we will be able to maintain this rather labor-intensive rhythm with future reports, or whether we will switch to a biennial rhythm. You all will be the first to know!

“I am already enjoying the great community and support of my BIGSSS fellows and hope to improve my academic skills and gain more knowledge about my research topic and beyond.”

Felix Lanver, Affiliated PhD fellow, CRC 1342

About BIGSSS

The Bremen International Graduate School of Social Sciences (BIGSSS) is one of Germany's leading schools of doctoral training in the social sciences. Having started with just a handful of fellows in 2002, our school hosts more than 70 international PhD fellows today.

BIGSSS' PhD program, in a nutshell, provides close supervision of dissertation work accompanied by demand-tailored education. A large network of research institutions located at the public University of Bremen and the private Constructor University Bremen provides us with the means to support our fellows academically, financially, and logistically.

BIGSSS consolidates different doctoral training programs underneath the same roof. The Regular program is a full-time PhD program in which fellows commit themselves to their own dissertation projects and the whole academic program of the BIGSSS curriculum. Our Regular PhD fellows receive demand-tailored theoretical and methodological training, acquire teaching experience in small seminars, and complete their top-notch dissertations in a timely manner.

The availability of the Regular PhD program depends primarily on the help of third-party funding agencies (DFG, DAAD, EU MSCA, etc.). BIGSSS was acknowledged twice by an international board of reviewers in the German Excellence Initiative in 2007 and 2012 respectively and by the European Union's Horizon 2020 Research and Innovation COFUND Program. Currently, BIGSSS hosts a DAAD fellowship program, and the DFG funded Research Training Group "Social Dynamics of the Self".

In addition, BIGSSS has an Affiliated and an Adjunct PhD Program. At different levels of institutional integration, both programs offer doctoral candidates working in the Social Sciences at the University of Bremen or Constructor University the chance to benefit from structured PhD education including a wide range of excellent seminars and workshops. The programs adhere to the BIGSSS' doctoral education standards and quality principles.

A Word with the Deans

Prof. Dr. Patrick Sachweh & Prof. Dr. Adalbert Wilhelm

We asked BIGSSS Dean Prof. Dr. Patrick Sachweh (PS) and Vice Dean Prof. Dr. Adalbert Wilhelm (AW) to review the past year and give a little preview into what's in store.

To begin with, how would you describe the role of BIGSSS within the Bremen Social Sciences?

PS: First and foremost, BIGSSS plays an important role in the Social Sciences through the provision of a structured PhD education. By including PhD students from various contexts, from large-scale research initiatives to individual PhD students, BIGSSS also integrates diverse research streams and may sometimes serve as an incubator for new ideas.

AW: I see BIGSSS as a small, vibrant, interdisciplinary community working together in trust for the creation of knowledge, the exchange of ideas, fostering mutual understanding, and being the glue in the Bremen Social Sciences.

Which institutional developments and challenges did BIGSSS face in 2022 and what are the implications for doctoral education at BIGSSS and for our PhD Fellows?

PS: One of the most important institutional developments was the transition from Jacobs University to Constructor University. We will try to smoothen the implications of this change for our PhD students as much as possible, but this will also entail changes...

AW: In 2022, BIGSSS completed its transition from an Excellence-initiative funded attractor to a steady-state endeavor. BIGSSS' mature framework of doctoral education provides stability and guidance. Based on our experience, PhD fellows can expect established structures, but also a strong willingness to adapt to scientific developments, and changing needs and demands.

Last year, the Constructor University emerged from Jacobs University in a process that was initiated earlier. What does this mean and what changes does it bring?

PS: The change in ownership at Constructor University will in the medium term also be accompanied by a shift in thematic and especially methodological foci. Data Sciences will become more important, and at BIGSSS we try to adapt to this development.

AW: The change from Jacobs University to Constructor University brings some emotional burden with it. It is always hard to say farewell to something you have become accustomed to. Other than that, I don't expect anything to change for BIGSSS and its PhD fellows. Constructor University is now an even "more private" university than Jacobs University ever was. This makes it even more different from the University of Bremen, but it also enables us at BIGSSS to live the complementarity of a private and a public institution even more visibly.




Adalbert Wilhelm: Adalbert Wilhelm started his "Bremen life" in September 2001 at the former International University Bremen and has witnessed various student cohorts, presidents, and changes and developments at the institution now called Constructor University. He holds a professorship in statistics and has participated in the university's self-governance in various capacities. Currently, he is the speaker of the Faculty Council. In addition to teaching data science (which sounds far sexier than statistics), he conducts research (when time permits) on statistical visualization, exploratory data analysis, statistical learning, and data mining. He has been a visiting professor at George Mason University, Fairfax, VA and at Università degli Studi di Cagliari, Italy. He loves hiking and skiing, which in addition to family ties, has kept him commuting on a weekly basis from Bavaria to Bremen for now more than 20 years.

Vice Dean of BIGSSS, Constructor University

2022 has been described as a year of change and global crises: the Russian war against Ukraine, global inflation, climate crisis, the ongoing Covid pandemic, but also a slow return to the pre-pandemic state and “normality”. What has 2022 brought to BIGSSS and especially to being a doctoral student in these turbulent times?

PS: The Russian attack on Ukraine in February 2022 came at a time when many were exhausted from the pandemic and hoping for some kind of recovery from the insecurities of two pandemic years. These hopes have all of a sudden been defeated. Also, for some of our students, it has meant that family and friends were personally affected, causing further worries. So being a PhD student, not just at BIGSSS but anywhere, is indeed challenging and demanding these days. This is why I am even happier that we can come together on a few occasions and hold events in person once again. I am particularly proud of the conference on intergenerational inequalities that our fellows have organized at Bremen’s Haus der Wissenschaft.

AW: This year of change and crises has brought a great deal of uncertainty about previously held firm beliefs in security, prosperity, and partnership to many humans and societies. At BIGSSS,



Patrick Sachweh: Patrick Sachweh is a Professor of Comparative Sociology at the University of Bremen since 2019. He is very familiar with Bremen as he has received his PhD from BIGSSS back in 2009. He has spent the 10 years in between as postdoctoral “Wanderjahre“ at the Max Planck Institute for the Study of Societies in Cologne, at Goethe University Frankfurt, and with a short excursion into more applied work at the Federal Institute for Population Research. While his website lists social inequality, comparative welfare states, and mixed methods as research interests, his most frequent research activity is searching for emails in an increasingly overflowing inbox.

Dean of BIGSSS, University of Bremen

however, the increased opportunities of personal exchange after the pandemic restrictions, and the return to (more) “normality” have raised the certainty that structured doctoral programs such as BIGSSS are important. We see this as an affirmation to continue to build and nurture a ‘glocal’ community strong enough to withstand change and global crisis.

What do you think lies ahead for BIGSSS in 2023 and 2024? What are you looking forward to, and what are your visions for doctoral education at BIGSSS?

PS: I am looking forward to meeting our second RTG-Self Cohort and two new DAAD fellows in September. Ahead of us lies the planning of the second phase of our Research Training Group (RTG) “Social Dynamics of the Self” and further developing our ideas for a PhD program in Social Data Science.

AW: I hope for a successful grant application for a second RTG that will provide additional funding, intensify our research in the field of social data science, and strengthen our position in the global social science research landscape. I hope that we will be able to complement the strong personal network and infrastructure at BIGSSS with a comparable digital research infrastructure. This would provide our fellows with all required technical tools and insights to make best use of the most recent technical developments, and enable them to continue producing cutting-edge social science research.

To finish with, what are your personal three highlights of the last BIGSSS year?

PS: This is an easy one: 1) Our Summer Retreat at Gut Ankelohe where PhD fellows and faculty came together for interdisciplinary exchange and teambuilding 2) the Graduation Ceremony at which we could finally celebrate our graduates after we had to postpone it time after time due to the pandemic; and 3) the Conference “Intergenerational Inequalities and the Contemporary Family Setup” that took place at Haus der Wissenschaft and was so well organized by some of our PhD and Postdoc Fellows.

AW: BIGSSS Graduation Ceremony, BIGSSS Graduation Ceremony, and BIGSSS Graduation Ceremony.

Jan
Feb
Mar
Apr
May
Jun
Jul
Aug
Sep
Oct
Nov
Dec



BIGSSS People

New Fellows & their PhD Programs in 2022

In autumn 2022, 22 fellows started their PhD projects at BIGSSS. Two of them are Regular PhD Fellows in the BIGSSS-DAAD program GloWel, 18 are Affiliated PhD Fellows from the Bremen Social Sciences, among them are 15 doctoral candidates in the CRC 1342 Global Dynamics of Social Policy, and two are Adjunct PhD Fellows.

The Regular PhD Program

The Regular PhD Program is the BIGSSS in-house full-time program for structured doctoral training. Fellows commit themselves to their own dissertation projects and the full academic program of the BIGSSS curriculum. They receive demand-tailored theoretical and methodological training, complete several milestones, and profit from close supervision by a committee from our diverse faculty and an external academic member.

The Affiliated PhD Program

The BIGSSS Affiliated PhD Program addresses doctoral candidates who already work in third-party funded or professorial research projects in the social sciences at the University of Bremen or Constructor University. Affiliated fellows benefit from a reduced structured BIGSSS curriculum in which they take part and complete several milestones on their way towards a PhD degree.

The Adjunct PhD Program

BIGSSS' Adjunct PhD Program addresses doctoral candidates who are supervised by BIGSSS Faculty members, but who only selectively follow our courses and academic events. As an excellent Graduate School of the Social Sciences, it is our vital interest to ensure a high-quality doctoral training program for all of our fellows. Accordingly, the principles of close supervision as developed at BIGSSS also pertain to adjunct fellows.

Regular PhD Fellows GloWel

Göksu Köktürk 16
Julio Iturra Sanhueva 17

Affiliated PhD Fellows CRC 1342

Anh Tran 20
Fabienne Stefanie Müller 21
Fritz Kusch 22
Felix Lanver 23
Fernando Alejandro Remache Vinueza 24
Hannes Salzmann 25
Mara Junge 26
Migyeong Yun 27
Heiner Salomon 28
Mai Mohamed Abdou Mahmoud 29
Laura Andrea Álvarez Tobar 30

Affiliated PhD Fellows

Fangyue (Diana) Bao 32
Hai Ha Nguyen 33
Oksana Chorna 34
Prakashnee Govender 35
Khadidiatou Senghor 36

New Adjunct Fellows

Andrés Barrero Salinas 37
Eric Nissen 37

BIGSSS-DAAD Graduate School Scholarship Program GloWel

GloWel, short for „Global Inequality, the Middle Classes and the Welfare State“, is a regular PhD program at BIGSSS in cooperation with the DAAD (German Academic Exchange Service) Graduate School Scholarship Program. GloWel hosts four international PhD students. The first two PhD fellows, Gonzalo Arévalo Iglesias and Catalina Ganga Leon, joined us in September 2021. With the cohort 2022, Göksu Köktürk and Julio Iturra started as Regular PhD Fellows in the GloWel program.

GloWel focuses on the interrelation between global inequalities, global social policies, and the role of the emerging middle classes for social and political integration. The program is particularly interested in comparative perspectives on the Global South and North and has strong ties to Bremen's CRC 1342 "Global Dynamics of Social Policy" and the national Research Centre for Social Cohesion RISC.

Regular PhD fellows BIGSSS-DAAD PhD program GloWel (from left to right: Göksu Köktürk, Julio Iturra, Gonzalo Arevalo Iglesias)



Jan
Feb
Mar
Apr
May
Jun
Jul
Aug
Sep
Oct
Nov
Dec

Jan
Feb
Mar
Apr
May
Jun
Jul
Aug
Sep
Oct
Nov
Dec



Göksu Köktürk Cebeci

Regular PhD Fellow

BIGSSS-DAAD program
GloWel

Dissertation working title: Environmental Degradation, Unpaid Care Work and Environmental Protests: A Case Study on Rural Areas of Turkey

Supervisor:
Dr. Judith Vey

Göksu's research focuses on how unpaid care work has been altered by the environmental degradation in the rural areas of Turkey by addressing how women, as everyday practitioners of unpaid care, organize protests against the environmental degradation to defend their livelihood and build solidarity. She applies various qualitative methods from a feminist standpoint in her dissertation. Her research interests were inspired by sociologist Maria Mies' work during her master's education at the Women's Studies department in Istanbul University and mainly include gender inequalities in unpaid work.

In addition to her professional activities, she enjoys doing sports, visiting art museums and writing.

Göksu is part of the team of Fellow Representatives.

Julio Iturra Sanhueza

Regular PhD Fellow

BIGSSS-DAAD program
GloWel

Dissertation working title: Network segregation, perceived economic inequality, and preferences for redistribution

Supervisor:
Prof. Dr. Patrick Sachweh
Prof. Dr. Olaf Groh-Samberg

Julio is interested in the relationship between social networks, perceived inequality, and preferences for redistribution. In contrast to the economic self-interest and value-driven explanations for the study of redistributive preferences, his research is jointly inspired by Peter Blau's structural analysis of network formation and the Reference Groups and Reality blend theory of Jonathan Kelley and Mariah Evans. Both theoretical influences comprise an approach for the study of redistributive preferences that integrates the structural analysis of network segregation processes with the sociopsychological influence of reference groups on perceived economic inequality.

Julio plans to use multilevel analysis on secondary data from cross-national and longitudinal surveys. He is also interested in causal analysis and experiments, and is planning to conduct a comparative factorial survey study in Germany and Chile.

Julio is a Chilean-trained sociologist (Universidad de Concepción) with an MSc in Sociology (Pontificia Universidad Católica de Chile) with a substantial interest in social stratification, distributive justice, and quantitative methods.





Affiliated PhD Fellows of the CRC 1342

— BIGSSS Affiliated PhD Program & the CRC 1342 “Global Dynamics of Social Policy”

The Collaborative Research Centre (CRC) 1342 “Global Dynamics of Social Policy” is an association of eight research institutes at the University of Bremen, in cooperation with Jacobs University Bremen, Bielefeld University and the University of Duisburg-Essen. The SFB 1342 has been funded by the German Research Foundation since 2018. The current funding period runs until the end of 2025.

By comprehensively integrating the Global South into the analysis, the CRC 1342 will analyze the global dynamics of public social policy beyond OECD centrism. Since a country’s social policy cannot be explained by its domestic circumstances alone, international relations and networks will be considered: trade relations, migration, war and colonialism, as well as the worldwide dissemination of ideas and legal regulations have a great influence on the social policy developments of individual countries. In addition, research in SFB 1342 is based on a broad understanding of social policy, including, among other aspects, education policy.

BIGSSS is responsible for the structured doctoral training in SFB 1342. Doctoral students in CRC 1342 participate in the BIGSSS Affiliated PhD Program and benefit from a needs-based curriculum tailored to the research focus of the CRC.

Jan
Feb
Mar
Apr
May
Jun
Jul
Aug
Sep
Oct
Nov
Dec

Anh Tran

Affiliated PhD Fellow

CRC 1342 “Global Dynamics of Social Policy”, SOCIUM Research Center on Inequality and Social Policy, University of Bremen

Dissertation working title: Cross-national variation in child benefit inclusion and the role of women’s collective agency

Supervisor:
Prof. Sonja Drobníč

Anh has joined BIGSSS as a doctoral researcher at the Collaborative Research Centre (CRC 1342) Global Dynamics of Social Policy, where she is working in the family policy project collecting data for a global historical database of child benefit policies. For her dissertation, she is interested in understanding the role of gender politics in the cross-national variation of child benefit inclusion. She is particularly interested in examining the emergence of social cash transfer policies targeting families, and to what extent they incorporate gender considerations.

Before starting her journey at BIGSSS, Anh was working as a research consultant with UN agencies and international NGOs on social protection policies across the Global South. Prior to this, she obtained her master’s in Public Policy and Human Development at the University of Maastricht and bachelor’s in International Studies at the University of Leiden.



Fabienne Müller

Affiliated PhD Fellow

CRC 1342 “Global Dynamics of Social Policy”, SOCIUM Research Center on Inequality and Social Policy, University of Bremen

Dissertation working title: Neoliberal thinking and its influence on the North American Free Trade Agreement and President Bill Clinton’s reform of health care

Supervisors:
Prof. Dr. Cornelius Torp
Prof. Dr. Delia González de Reufels

Fabienne’s dissertation project focuses on the history of ideas, with neoliberalism as the core ideology influencing the politics of the government of President Bill Clinton in the 1990s. Following the historical approach, Fabienne is looking for archival material illustrating the influence ideology had on two specific topics: the signing of the North American Free Trade Agreement and the failure of President Bill Clinton’s health care reform. Fabienne believes that only a thoroughly analyzed past, especially underlying concepts and ideas and their respective roles, can enable us to learn from it.

Fabienne likes to read a range of literary genres from philology, mythology, history, especially ancient history and archeology to the more nuanced and contemporary genres of poetry, traditional detective novels, classic literature, and Latin American literature. Political activism, different language courses, voluntary work, music and visits to museums and exhibitions are also interests that are important to her.

Jan
Feb
Mar
Apr
May
Jun
Jul
Aug
Sep
Oct
Nov
Dec



Fritz Kusch

Affiliated PhD fellow

CRC 1342 “Global Dynamics of Social Policy”, SOCIUM Research Center on Inequality and Social Policy, University of Bremen

Dissertation working title: Popularizing Protectionism. The American (Protective) Tariff League in the Age of Tariff Reform, 1885–1959

Supervisor: Prof. Dr. Cornelius Torp

Fritz is a doctoral researcher at the Collaborative Research Centre (CRC 1342) “Global Dynamics of Social Policy”. In his thesis, he analyzes the ideological development of protectionism in a long-term historical perspective. Fritz looks at continuities and change in the history of the American Protective Tariff League, the largest protectionist pressure group. Fritz examines the ways in which the decisive reform period in US Tariff history influenced protectionist groups and their ideology. During this time, US tariff policy moved away from protectionism towards a multilateral free trade order. His work traces the organization’s history, from its founding in 1885 through its renaming as the American Tariff League in 1926, and its eventual dissolution in 1959.

Before coming to Bremen, Fritz received a bachelor’s degree in modern history from the University of Freiburg, and later a bachelor’s degree in turcology and a master’s degree in history from Free University in Berlin. He also studied abroad at Boğaziçi University and at the University of Istanbul in Turkey. Besides his PhD work, Fritz also occasionally works as a seminar host at the Berlin Wall memorial in Berlin.

Felix Lanver

Affiliated PhD Fellow

CRC 1342 “Global Dynamics of Social Policy”, SOCIUM Research Center on Inequality and Social Policy, University of Bremen

Dissertation working title: The Development of Unemployment Protection Schemes in Latin America. Identifying Determinants of Policy Change and Generosity

Supervisor: Dr. Nate Breznau

Felix’s research is based on his work at the Collaborative Research Centre (CRC 1342), where he collects data on the global and historical development of unemployment protection schemes. In his dissertation he focuses on Latin America, where unemployment protection schemes exist in many cases, but are somewhat under-researched, at least in terms of policy introduction and change. His research will also shed light on the generosity of unemployment protection regimes in the region, compare differences and similarities between cases, and try to identify conditions of social policy introduction and legislative change. He is interested in the political economy of the welfare state, and conditions of policy change. His work is mainly macro-comparative and based on quantitative methods.

Felix is currently volunteers as a Fellow Representative.



Jan
Feb
Mar
Apr
May
Jun
Jul
Aug
Sep
Oct
Nov
Dec

Fernando Alejandro Remache Vinueza

Affiliated PhD fellow

CRC 1342 “Global Dynamics of Social Policy”, SOCIUM Research Center on Inequality and Social Policy, University of Bremen

Dissertation working title: Protectionism and the implementation of pension schemes in Argentina 1955-1982

Supervisors:
Prof. Dr. Delia Gonzalez de Reufels
Prof. Dr. Cornelius Torp

Fernando is a doctoral researcher in History with focus on pensions in Argentina in the Collaborative Research Centre (CRC 1342) project B11 “Protectionism and Social Policy in the Americas, 1890–2020”. In his dissertation, he analyzes linkages between pensions and industrial policies between 1955 and 1982. For this purpose, Fernando is using archival research on official documents such as parliamentary acts.

Fernando holds a bachelor’s degree in history issued by the Complutense University of Madrid. Later, he studied the joint master’s program in Contemporary History at the Complutense University of Madrid. He had the opportunity to increase his interdisciplinary knowledge with the postgraduate Diploma in Diplomacy and International Relations at the Diplomatic School of Spain.

More recently, he was granted an Erasmus Mundus scholarship by the European Union for the International Master’s in South European Studies EUROSUD at the University of Glasgow, the Autonomous University of Madrid, and LUISS Guido Carli University Rome. This experience gave him a strong multicultural awareness and a solid knowledge on social sciences.



Hannes Salzmann

Affiliated PhD Fellow

CRC 1342 “Global Dynamics of Social Policy”, SOCIUM Research Center on Inequality and Social Policy, University of Bremen

Dissertation working title: The Times are a-Changing: Determining Party Positions through Automated Parliamentary Debate Analysis

Supervisor:
Prof. Dr. Sebastian

Hannes’ research is on the positioning of political parties. His background and interest are in computational social science, quantitative text analysis, and the ever growing possibilities of automated text analysis methods. He works on determining party positions through parliamentary debate analysis. By focusing on this combination of method and data, he aims to improve upon party manifesto analysis by having a continuous data source and the means to go down to the level of individual members of parliament. He is especially interested in how party positions change and to what extent intra-party differences between members of parliament exist.

In his free time Hannes enjoys bouldering, playing the guitar and singing, as well as woodworking.

Jan
Feb
Mar
Apr
May
Jun
Jul
Aug
Sep
Oct
Nov
Dec



Mara Junge

Affiliated PhD Fellow

CRC 1342 “Global Dynamics of Social Policy”, SOCIUM Research Center on Inequality and Social Policy, University of Bremen

Dissertation working title: Advocating Immigrant Rights in a Hostile Environment? The Role of Civil Society Organisations in the Field of Immigrants Social Protection

Supervisor:
Dr. Friederike Römer

Mara explores how civil society organisations (CSOs) condition the processes of inclusion and exclusion of immigrants’ social protection. CSOs are identified as relevant actors to advocate for immigrant rights, yet appear to operate in a ‘hostile environment’ – with anti-immigrant sentiments widespread in public opinion, parties, and government actors opposing immigrant rights. Specifically, Mara studies the strategies of CSOs to assert influence on the respective policy trajectories in diverging institutional contexts. She investigates the role of CSOs in different regimes from a macro-perspective to account for inter-regime differentials and conducts a case study of the United Kingdom and Switzerland to explain potential intra-regime effects on CSOs’ strategies to assert influence. While this approach allows her to address research gaps and academic ambiguity, the topic fundamentally address a greater political relevance of pending increased migration patterns. Global migration will increase given economic crises, the climate crisis, and (corresponding) conflicts, setting the stage for increasing immigrant inequality and insecurity. The analysis of the actors involved in shaping the policy processes, accelerating inequality or containing insecurity, is key to not only understand, but to address these underlying issues.

Migyeong Yun

Affiliated PhD Fellow

CRC 1342 “Global Dynamics of Social Policy”, SOCIUM Research Center on Inequality and Social Policy, University of Bremen

Dissertation working title: A study on horizontal interdependency of the development of public long-term care system in South Korea and Taiwan.

Supervisors:
Prof. Dr. Cornelius Torp
Prof. Dr. Delia González de Reufels

Migyeong’s dissertation project is about the development of the public long-term care system in South Korea and Taiwan. She is looking at this from the perspective of horizontal interdependency, putting a focus on transnational influence on national policymaking. South Korea and Taiwan showed bold steps towards a national long-term care program by introducing or attempting to introduce social long-term care insurance program in 2007 and 2016, respectively. This was a striking change considering the two countries’ previous attempts toward social security. At the same time, even though the two countries share many national characteristics shaping the development of a welfare state, and both attempted to adopt a similar long-term care insurance program, only South Korea managed to do it. This poses the questions of why they considered introducing the system and why only South Korea made it whereas Taiwan did not. Inspired by these puzzles, Migyeong approaches the cases with a perspective of horizontal interdependency, or more precisely, policy learning.

“BIGSSS will hopefully give me not only the academic tools, but the community of fellow researchers to navigate the endeavour of writing a dissertation project!”

Mara Junge, Affiliated PhD Fellows/CRC 1342

Jan
Feb
Mar
Apr
May
Jun
Jul
Aug
Sep
Oct
Nov
Dec



Heiner Salomon

Affiliated PhD Fellow

CRC 1342 “Global Dynamics of Social Policy”, SOCIUM Research Center on Inequality and Social Policy, University of Bremen

Dissertation working title: How do redistribution preferences influence social protection politics in nascent welfare states?

Supervisor:
Prof. Dr. Sebastian Fehrlner

Before joining the University of Bremen as a Doctoral Researcher, Heiner Salomon was a research consultant and practitioner working for international consultancies, agencies and think tanks on social policies, predominantly cash transfers in Global South countries, for over 8 years.

Over the past few decades, many countries in the Global South have institutionalized and expanded direct cash transfers. Heiner’s research focuses on the relationship between preferences for redistribution among the population and the actual redistribution that takes through social policies in those nascent welfare states.

Next to his internationally comparative research agenda, his case study is on Bangladesh, where he analyzes the impact of the Old Age Allowance – a social pension – on preferences for redistribution among recipients of the pension.

Mai Mohamed Abdou Mahmoud

Affiliated PhD Fellow

CRC 1342 “Global Dynamics of Social Policy”, SOCIUM Research Center on Inequality and Social Policy, University of Bremen

Dissertation working title: International organizations and the development of health care systems in the MENA

Supervisor:
Dr. Lorraine Frisina Doetter

Mai’s research is about the role of international organizations for the development of healthcare systems in the Middle East and North African region (MENA). She aims to examine the health reforms that have been introduced in MENA countries and whether these reforms are (de jure) in line with the recommendations of international organizations. To this end, she plans to conduct a content analysis of recommendations given by World Health Organization and the World Bank on healthcare developments.

Before starting her PhD, Mai was already in Bremen for four years. She did her masters in International Relations at the University of Bremen and then Jacobs University (now Constructor University). Mai worked as a student assistant in different projects in the Collaborative Research Centre (CRC 1342); among them the project A04 “Development of health-care systems” in which she now works as a doctoral researcher.



Laura Andrea Álvarez Tobar

Affiliated PhD Fellow

CRC 1342 “Global Dynamics of Social Policy”, SOCIUM Research Center on Inequality and Social Policy, University of Bremen

Dissertation working title: Inclusion and exclusion of social groups in the Spanish Welfare State

Supervisors:

Dr. Johanna Kuhlmann,
Prof. Dr. Delia Gonzáles de Reufels

Laura’s research looks into mechanisms that explain legitimation behind sequences of inclusion and exclusion in the last 120 years in the Spanish Welfare state. Her research has an ideational approach, focusing on how narratives influence social policy.

Before BIGSSS, Laura researched media freedom in authoritarian regimes at the University of Passau. Previously, she did research in Colombia about the Colombian Peace Process, combining applied social science research with human rights advocacy.

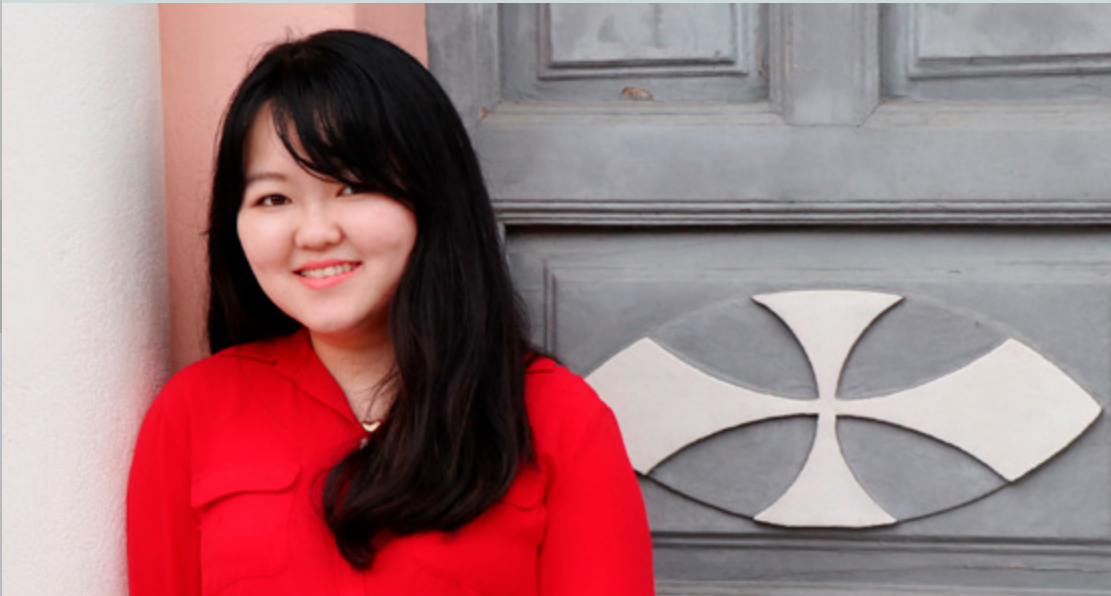
Laura loves going for runs at the Rhododendron park in Bremen, coffees with colleagues after lunch, reading science fiction, and writing short stories.

“BIGSSS has supported me to grow both my hard and soft skills to succeed in German academia. I became a part of a community of international scholars that inspire me everyday.”

Laura Andrea Álvarez Tobar (Affiliated PhD fellow, CRC 1342)



Jan
Feb
Mar
Apr
May
Jun
Jul
Aug
Sep
Oct
Nov
Dec



Fangyue (Diana) Bao

Affiliated PhD Fellow

Institute of Intercultural and International Studies (InIIS), University of Bremen

Dissertation working title: The Influence of International Organizations in China, from an educational perspective

Supervisor: Prof. Dr. Kerstin Martens

Fangyue (Diana)'s Ph.D. project focuses on the influence of international organizations (IOs) in China from an educational perspective. She is interested to understand to what extent do IOs have an influence in China, especially since China is a powerful state, a non-democratic state, an economic late-comer, and from an Eastern cultural background. She will conduct case studies on the educational programs from OECD, World Bank, Asian Development Bank, and other IOs engaging in China. She will conduct in-depth interviews with IO staff and officials and professionals in China.

Prior to Bremen, Diana used to work as an educational consultant, a business founder, and a musical theater producer in China. She received her master's degree from Harvard University Graduate School of Education (Learning and Teaching) and her bachelor's degree from Georgetown University School of Foreign Services (International Politics Major). She has studied and lived in US, China, and UK. She is excited to embrace her life in Bremen, in Germany, and in Europe.

Hai Ha Nguyen

Affiliated PhD Fellow

SOCIUM Research Center on Inequality and Social Policy, University of Bremen

Dissertation working title: Multi-informant support networks of families with children affected by chronic inherited conditions

Supervisor: Prof. Dr. Betina Hollstein

In her dissertation project, Hai Ha explores the multi-informant support networks surrounding families involved in caring for children with chronic inherited conditions. With her research, she aims to contribute to the understanding of the importance of social networks within caregiving contexts. Her research is connected to larger sociological questions about the intergenerational dimensions of support networks and the qualitative analysis of network data.

Hai Ha is working with Prof. Dr. Betina Hollstein in the working group "Qualitative Methods and Micro-sociology" at the SOCIUM. She studied Sociology (MA) at the University of Bielefeld and at Sciences Po Paris (student exchange) before coming to Bremen.





Oksana Chorna

Affiliated PhD Fellow

Research Centre for East European Studies, University of Bremen

Dissertation working title: Social policy in Ukraine under conditions of war: Substitution for the state by volunteers

Supervisor:
Prof. Dr. Heiko Pleines

A developed civil society is considered as an integral part of the democratic state. How then does the role of civil society change in an invaded country? Formalized civil society organizations in Ukraine were previously deemed as undeveloped according to western standards, however, the Russian war on Ukraine in 2014 caused the creation of numerous grassroots initiatives. Since the full-scale invasion in 2022, civil society is one of the leading forces in the resilience against aggressor. Civil society has been providing goods for social groups in need, supplying the army, evacuating residents of risk areas, resisting information attacks from Russia, among other activities. How sustainable are those initiatives? To whom are they accountable? How are they different from often sponsored by the Western countries NGOs? Lastly, how do they interrelate with the state?

Oksana aims to answer these questions, studying civil society providing social care in Ukraine. In her research, she wants to question the definition of civil society common in the western states by comparing it to the grassroots initiatives in a country in a state of war.

Prakashnee Govender

Affiliated PhD Fellow

Institut Arbeit & Wirtschaft, University of Bremen

Dissertation working title: Material Change? The gender implications of international framework agreements. The case of H&M and the apparel industry

Supervisor:
Prof. Dr. Irene Dingeldey

Prakashnee has a special interest in transnational labor regulatory instruments, gender, and trade unions. For her PhD research, she is investigating how international framework agreements influence the working conditions for women working in global apparel supply chains, and is doing a case study on H&M's manufacturing suppliers. She is applying the social relations analytical framework, which requires that the assessment of policy tools take into account how systemic factors and structural relationships shape gender inequality and women's disempowerment.

Previously, Prakashnee was employed for many years within the South African trade union movement where she was responsible for conducting labor and social policy advocacy work. Her PhD research is motivated by her personal insights into the extent to which the interests of women workers are under-emphasized by unions, international organizations, and academia alike.





Khadidiatou Senghor

Affiliated PhD Fellow

Leibniz Centre for Tropical Marine Research (ZMT) Bremen

Dissertation working title: Social processes in fisheries and marine protected areas in Senegal: Power asymmetries, actors relationship and institutional change

Supervisor: Prof. Dr. Achim Schlüter

Khadidiatou is a Ph.D. student in the Institutions and Behavioral Economics working group at the Leibniz Center for Tropical Marine Research. Originally from Senegal, Khadidiatou's research interests center around social processes in Senegal fisheries and marine protected areas, with a focus on power asymmetries, actors' relationships, and institutional change. She will employ a range of methodologies, including qualitative interviews and network analysis, and observations, to gather data on the social processes at play. She is using discourse analysis and process tracing for the analysis of these data.

In her free time, Khadidiatou enjoys reading and exploring new cultures. Her passion for learning about different cultures has inspired her to pursue research that has the potential to contribute significantly to our understanding of marine resource management in Senegal, and identify opportunities for improving the livelihoods of those who depend on them. In addition to her academic pursuits, Khadidiatou has a strong interest in art work and design.

These PhD Fellows have also started their PhD journey at BIGSSS in 2022:

Affiliated PhD Fellows

Harry Churchill

CRC 1342 "Global Dynamics of Social Policy", SOCIUM Research Center on Inequality and Social Policy, University of Bremen

Dissertation working title: Settler Hops: Protectionism, Social Policy and the Politics of Beer in Argentina since 1890.

Sooahn Meier

CRC 1342 "Global Dynamics of Social Policy", SOCIUM Research Center on Inequality and Social Policy, University of Bremen

Dissertation working title: OECD as a global health actor: topic prioritization, role expansion and idea changes.

Adjunct PhD Fellows

Andrés Barrero Salinas

University of Bremen, DAAD Doctoral Fellow

Dissertation working title: Critical Discourse Studies as Social Science: different layers of reflection around the implementation of quantitative text-analysis tools.

Eric Nissen

SOCIUM, Research Center on Inequality and Social Policy

Dissertation working title: The experience of recognition conflicts and the influence on right-wing populist attitudes.

New Faculty

Prof. Dr. Cornelius Torp 40

Prof. Dr. Andreas Klee 41

“I look forward to connecting with a lot of different researchers, expanding possibilities for collaboration and exchange, as well as gathering new skills through the courses offered by **BIGSSS.**”

Hannes Salzmann (Affiliated PhD fellow, CRC 1342)



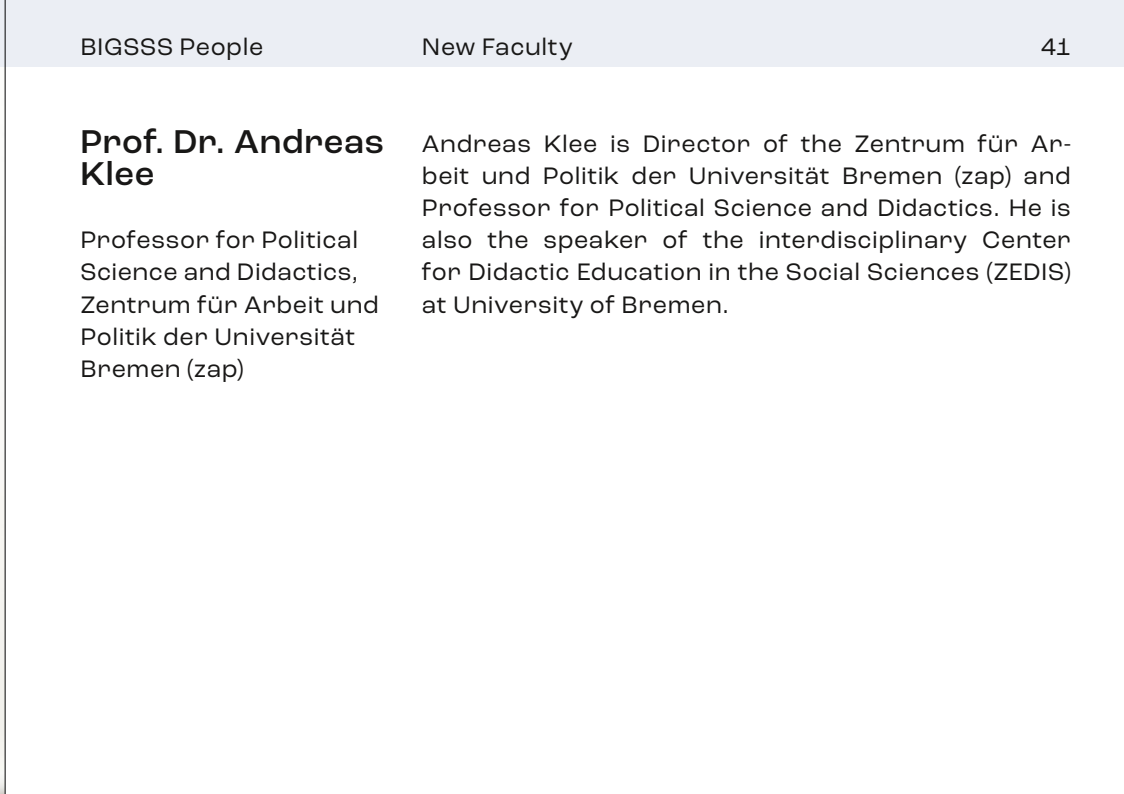
Prof. Dr. Cornelius Torp

Professor of Modern History, University of Bremen

Cornelius' research interests cover the entire 19th and 20th centuries and extend to the immediate present. He is interested in the development of the welfare state and especially in its normative foundations. A second focus of his research is on examining historical globalization processes and their effects on national societies. Methodologically, Cornelius' work is consistently interdisciplinary and tries to bridge the gap between history and the social sciences.

The interdisciplinary approach of BIGSSS and its worldwide geographic scope fit well with Cornelius' work. He is particularly interested in supervising doctoral theses which have a strong historical dimension.

Jan
Feb
Mar
Apr
May
Jun
Jul
Aug
Sep
Oct
Nov
Dec



Prof. Dr. Andreas Klee

Professor for Political Science and Didactics, Zentrum für Arbeit und Politik der Universität Bremen (zap)

Andreas Klee is Director of the Zentrum für Arbeit und Politik der Universität Bremen (zap) and Professor for Political Science and Didactics. He is also the speaker of the interdisciplinary Center for Didactic Education in the Social Sciences (ZEDIS) at University of Bremen.

“I expect to get feedback that helps me improve both professionally and personally. I want to refine my approach to research.”

Mai Mohamend Abdou Mahmoud, Affiliated PhD fellow, CRC 1342

Jan
Feb
Mar
Apr
May
Jun
Jul
Aug
Sep
Oct
Nov
Dec



New Staff

Dr. Judith Vey 44

Rena Tecklenburg 45

Dr. Regina Arant 46

Jan
Feb
Mar
Apr
May
Jun
Jul
Aug
Sep
Oct
Nov
Dec

Dr. Judith Vey

Academic Coordinator

Judith started her work as Academic Coordinator at BIGSSS in September 2022. She is responsible for providing content-related support and advice to the fellows as well as coordinating the two ongoing DAAD Graduate School Scholarship Programs programs. Judith is also a research associate at the SOCIUM and has an important linking function for the social science research institutes of the university. She takes on supporting activities in the University of Bremen's social sciences's current cluster application for the Excellence Initiative.

Before this position, she was the head of the research area "Social movements, technology, conflict" at the Technical University Berlin. Judith holds a PhD in Sociology from the Goethe University Frankfurt. Her research interests include social movements, (forced) migration, and political theory. In her projects, she aims to further develop participative methodologies. Judith regards it as a wonderful task to help the fellows through ups and downs of a PhD and to support them in developing their own academic career. At BIGSSS, she appreciates the supportive and constructive discussion culture, the openness to explore new paths and solutions, and that challenges are tackled cooperatively by the whole team.



Rena Tecklenburg

Coordinator of Studies

At BIGSSS, Rena is taking over the position of Coordinator of Studies since September 2022. She is replacing Regina Arant as the Director of Studies who is on parental leave until summer 2023. As an affiliated PhD fellow working on transmission processes in interethnic families, she is quite familiar with the Graduate School.

In her position as Coordinator of Studies, Rena is responsible for the organization of the curriculum and the course planning. An important part of the role is to support the fellows in their journey as PhD students at BIGSSS and to advise them on the milestones of the curriculum. The position includes involvement in several stages of admission processes, as well as communication with the faculty, postdoctoral affiliation, and support of visiting fellows. She also organizes the annual BIGSSS Best Paper Award. Rena's door is always open for discussing the pleasures and challenges of being a PhD student and other questions related to the progress of one's PhD.

Dr. Regina Arant

Director of Studies

Regina started working as Director of Studies in February 2022. As she received her award-winning PhD in Psychology from BIGSSS in 2016, Regina knows the institution very well. In addition to her work at BIGSSS, she has been working as a Postdoctoral Fellow at the Department of Psychology and Methods at Constructor University since 2015. Her research interests include social cohesion on various societal levels, the construction and change of geopolitical identities, as well as personality and identity development in response to intercultural experiences.

Regina is glad to be back at BIGSSS and enjoys expanding her focus on science management while continuing to conduct research at Constructor University. As Director of Studies, she is responsible for the curriculum, the supervision of admission and dissertation processes, and the organization of academic events. Of particular importance to her is the consultation and mentoring of fellows as well as the strategic and organizational development of the institution. With over a decade of experience in the academic landscape in Bremen, Regina feels well prepared for her new responsibilities.

In autumn 2022, Regina and her partner welcomed a baby girl to her family and is, therefore, on parental leave until summer 2023.





Jan
Feb
Mar
Apr
May
Jun
Jul
Aug
Sep
Oct
Nov
Dec

“I expect to increase my knowledge on theories and creating wide academic networks for joint projects in the future.”

Fernando Alejandro Remache Vinueza, Affiliated PhD Fellows/ CRC 1342



BIGSSS Research & Events

BIGSSS Best Paper Awards 2022	52
Conference on “Intergenerational Inequalities and the Contemporary Family Setup”	58
Summer Retreat	60
BIGSSS Graduation day	62
Book publication	66
DAAD Graduate School Scholarship Program	68
BIGSSS Computational Social Science Summer School on Social Cohesion	70
Defenses	74
Selected Publications by BIGSSS PhD and Postdoctoral Fellows	78
Selected Publications by BIGSSS Alumni	81

The BIGSSS Best Paper Awards 2022

And the winners are Audris Umel and Eloisa Harris – Congratulations!

Audris Umel and Eloisa Harris were awarded the BIGSSS Best Paper Award 2022, worth 500 euros each, at the BIGSSS Meeting of Members on 18 May 2022.

An honorable mention went to Simone Tonelli for the paper “What Curbs Social Investment? The Effect of Foreign Electoral Outcomes on Childcare Expenditure Levels”. The paper was published in the Journal of Social Policy.

Single-authored Best Paper Award:

Audris Umel: Filipino migrants in Germany and their (ironic) space-time constructions of their home and host societies in Facebook. (Dissertation chapter)



Co-authored Best Paper Award:

Harris, Eloisa: Römer, Friederike (2022): Contextual welfare chauvinism: Leftwing governments and immigrant welfare rights in Western Europe. In European Journal of Political Research, Article 1475-6765.12556.



Laudation for Audris Umel

By Dr. Anna Safuta, May 2022

“Dear Audris (if I may), Dear Distinguished Colleagues,

I have the immense privilege of praising a very original, empirically and conceptually rich article, combining migration and diaspora studies with psychological research on social representations of time and space.

The article shows how Filipino and Filipina migrants in Germany negotiate the meaning of home and host country in discussions in Filipino groups on Facebook. To that end, the paper uses the concept of ‘chronotopes’, which refer to juxtapositions of time and place anchoring our experiences as individuals and as members of social groups. Chronotopes acquire a particular meaning in migration contexts, because, as cited in the paper, leaving one’s homeland entails physically leaving a time and place, but not forgetting or abandoning it.

The paper shows the bittersweet nature of the homeland chronotope – home in the Philippines is perceived as a warm and sunny place filled with togetherness, but also the source of burdensome kinship obligations such as remittances. Conversely, Germany is associated with cold weather, loneliness and isolation, but also opportunities to acquire new skills and show resilience, especially for women. In that context, social media offer migrants opportunities to recreate in the virtual realm a community reminiscent of home.

Audris, your paper is very topical – social media analysis is now used to answer a variety of research questions in many social science disciplines, but it is especially relevant for us, scholars of migration, as online tools are one of the main instruments used by migrants and displaced people to communicate with co-ethnics, integrate into their temporary or long-term host countries, and build transnational lives.

Your paper was also a methodological challenge – because of the personal and sensitive nature of the collected data, because of the time and emotional investment needed to collect it, and because of the interpretive approach you opted for. But the article meets

those challenges brilliantly, a prowess the jury of the BIGSSS Best Paper Award wanted to reward, as your article stood out from its excellent competitors.

First, you conducted a one-year online and offline ethnography, including participant observations, archival research, and focus group discussions. Your main research base was the largest Facebook group gathering Filipinos in Germany. You did an impressive job in garnering permissions, support and participation from the community surrounding the group, in order to be able to observe and use what you saw online as research material.

Second, you opted for an interpretive approach combining ethnography with discursive psychology, focusing not only on what is said, but also on how it is said, and what functions it fulfils for those who say it and those who read it online. In a time when it becomes increasingly difficult to challenge the assumption that ‘data’ can only mean rows of numbers quantifying variables, your argument is based on data collected in face-to-face interactions, but also via careful analysis of Facebook posts, comments and exchanges involving text, emojis, non-textual reactions, pictures, memes, hashtags. All this in Tagalog, English, German or several of these languages at the same time.

Although it probably needs shortening and streamlining before publication, we believe the article offers an innovative empirical approach underpinned by a well-crafted conceptual apparatus. You also introduce your own concept of ‘irony chronotopes’ that we hope will be explored further in future publications.

Audris, my warmest congratulations – in my own name and on behalf of this year’s BIGSSS Best Paper Award jury. We are looking forward to reading more of your work!”



Dr. Anna Safuta is a former BIGSSS Affiliated Postdoc Fellow and now Postdoctoral Researcher and Lecturer at University of Tübingen. She was a member of the selection committee.

Dr. Anna Safuta

Laudation for Eloisa Harris

By Dr. Kaitlin Alper, May 2022

“Dear Friends and Colleagues,

I am honored today to present the co-authored BIGSSS Best Paper Award to Eloisa Harris and Friederike Romer for their innovative and interesting research on immigrant welfare rights.

This article, which is in its second round of revisions at the European Journal of Political Research, investigates the understudied role of left-wing parties (particularly social democratic parties) in restricting welfare rights for immigrants. The authors find that social democratic parties, despite their pro-welfare state platforms, frequently enact reforms that restrict the welfare rights of immigrants.

The paper further shows that this relationship is context dependent. When social democratic parties are in coalition with far-left parties, they are less likely to restrict immigrant rights. Conversely, they are more likely to restrict welfare rights for immigrants when unemployment rates are high. This highlights the need to study party politics within the broader political, social, and economic context in which they operate.

Elle and Friederike’s research thus contributes to research on the welfare state, on parties and on migration, impressively merg-

Dr. Kaitlin Alper is a former BIGSSS visiting PhD Fellow from University of North Carolina at Chapel Hill (USA) and now is a Postdoctoral Researcher at the Danish Centre for Welfare Studies DaWS at Southern University of Denmark. She was a member of the selection committee.

Dr. Kaitlin Alper

ing these fields to shed new light on an important phenomenon. This stood out to the selection committee, as we wanted to reward interdisciplinarity as well as academic rigor and theoretical novelty. The paper is also exceptionally polished, as evidenced by how far you have gotten in the publication process so far.

We were also particularly impressed with your methodological contribution in addition to your theoretical one. Compiling nearly thirty years of data across fifteen European countries on immigrant welfare rights is no small task, and provides a service to the broader discipline in addition to serving you well in this particular paper. Although we received multiple excellent submissions, this combination of theoretical and methodological novelty was particularly impressive to the jury.

“I expect my colleagues and supervisors to defy my ideas, and at the same time to be supportive of me and others. It is possible to be tough without losing tenderness.”

Julio Iturra Sanhueza, Regular PhD fellow, BIGSSS-DAAD GloWel program

Conference on “Intergenerational Inequalities and the Contemporary Family Setup”

By the conference team, March 2023

In November 2022, the international early career researchers conference on “Intergenerational Inequalities and the Contemporary Family Setup” took place in Bremen. Twelve doctoral and post-doctoral researchers from six different countries and two keynote speakers came together for two days to discuss the causes, consequences, and challenges that intergenerational inequalities pose to modern families. The conference aimed to provide a space for rich interdisciplinary discussion. Participants highlighted the positive and open environment for discussion, as well as the good organization of all aspects of the event.

The program opened with Dr. Mara Yerkes’ (Utrecht University) keynote talk on “Intergenerational Solidarity in Cross-National Perspective.” Paper presentations were held by the participants



“I am excited to engage in interdisciplinary exchange and to collaborate with peers from different disciplines at BIGSSS.”

Khadidiatou Senghor, Affiliated PhD fellows, ZMT

in four thematic sessions covering the topics “Intergenerational Cohesion”, “Gender and Age Ideology”, “Parental and Siblings’ Influences on Children”, and “Labour Market Inequality and Migration”. Dr. Nora Waitkus (Tilburg University, London School of Economics) gave the closing keynote presenting her current research on wealth inequality across household types and countries. The academic debate was complemented by a social dinner and a city tour where participants had the chance to discover more of Bremen and learn about its history.

The conference was initiated and organized independently by PhD and postdoctoral researchers from BIGSSS and SOCIUM. It was made possible through funding from the Academy of Sciences and Humanities in Hamburg and additional financial support from the RTG SELF. The team did an amazing job in successfully organizing a conference in the early stages of their career.

The organizing team consisted of Carina Hartz (Regular PhD Fellow, RTG Self), Catalina Ganga León (Regular PhD Fellow, BIGSSS-DAAD GSSP GloWel), Gonzalo Anévalo Iglesias (Regular PhD Fellow, BIGSSS-DAAD GSSP GloWel), Henriette Bering (Affiliated PhD Fellow, SOCIUM), Tanya Keni (Regular PhD Fellow, RTG Self), Dr. Thurid Eggers (postdoctoral researcher SOCIUM, University of Bremen), Lara Minkus, PhD (Affiliated Postdoc Fellow, SOCIUM & Europa Universität Flensburg).



Summer Retreat

By Patricia Abicht, August 2022

Interdisciplinary exchange and teambuilding at Gut Ankelohe

In June 2022 we were delighted to be able to once again hold a Summer Retreat for our 2021 cohort in their second semester. The Summer Retreat brings together PhD Fellows and faculty for interdisciplinary exchange, soft skills workshops and offers plenty of opportunities for networking. This Summer Retreat was made up of a mix of Affiliated PhD Fellows and fellows from the GloWel and RTG SELF programs, as well as BIGSSS faculty members from a range of disciplines, and took place at our old haunt “Gut Ankelohe”, a historic farmstead between Cuxhaven and Bremerhaven.

Over the course of the retreat, our fellows were given the opportunity to present their research projects to interdisciplinary audiences. We were particularly fortunate this year to be able to host Prof. Roy Baumeister, Professor of Psychology at the Univer-

sity of Queensland and Mercator Fellow for the RTG SELF program. He was our keynote speaker, and held a fascinating talk “Toward a Scientific Theory of Free Will” on the concept of self-control and decision-making. We were also happy to invite back BIGSSS Alumna Dr. Nadine Binder, who held two workshops “Staying on top of the game” and “Dealing with setbacks”, providing practical advice and leading discussions with our fellows on managing workloads and remaining focused.

Of course, there was also some leisure time, and the Summer Retreat wouldn't have been the same without an intense Faculty versus Fellows football match, which was this time very clearly won by our fellows, and some communal gatherings around the bonfire!



BIGSSS Graduation Day

The seventh BIGSSS Graduation Day finally took place on September 3, 2022, after more than four years of eager anticipation and repeated postponements. On this event, usually held every other year, we celebrate our graduates and their achievements. The large event brings together graduates, families, and friends, but also their colleagues, our faculty, staff, as well as the leadership of the universities.

Unfortunately, like so many other things, Graduation Day fell victim to the COVID-19 pandemic once more. Over the past four and a half years, an impressive number of 61 BIGSSS PhD Fellows have completed their dissertations, and this year 27 of them were able to attend Graduation Day as our very special guests. This day was dedicated to them, and was all about honoring our graduates, their achievements, and their time at BIGSSS.



We relied on the tried and tested, but also tried some new things. As for the tried and tested. The Dean of BIGSSS, Prof. Dr. Patrick Sachweh, opened the event and reminded the graduates that in addition to the professional qualification of their doctorate, they had also acquired intellectual strength, perseverance, and the ability to think outside the box. Vice Dean Prof. Dr. Adalbert Wilhelm reflected on the role of BIGSSS for the graduates as a safety net, both intellectually and academically, as well as privately through the friendships that our alumni have formed during their time at BIGSSS.

The opening speeches were accompanied by input from the leaders of the universities. Dr. Mandy Boehnke, best known to our graduates as the former BIGSSS Director of Studies, welcomed the audience with the first public appearance in her new role as University of Bremen's Vice President for Internationalization, Academic Qualification, and Diversity. She highlighted BIGSSS as a role model for everything she has done and will continue to work on in academia: internationalization, diversity among fellows, and high standards of higher education. Prof. Dr. Fabio Pammolli, President of then Jacobs University, highlighted the achievements of the graduates, emphasized the need for interdisciplinary research as carried out at BIGSSS, and looked forward to the future collaboration between the two universities.

The keynote speech was delivered by Prof. Jonathan D. Jansen, President of the Academy of Sciences of South Africa and a distinguished Professor of Education at the Stellenbosch University in South Africa. He talked about the relevance of a doctorate, and about the question of what it is good for, apart from a professional and intellectual career. Jansen's question likely touched on similar musings many graduates had at some point during their PhD journey. In his reflections, Jansen focused on the question of social relevance, of new beginnings, and new opportunities in a world that has been pushed by previous generations to its limit.

Jansen was followed by Dr. Stefan Wallaschek, Regular PhD Fellow of Cohort 2014, and now a postdoctoral researcher at the Europa Universität Flensburg. In his Fellow Address, Stefan reflected on his time as a BIGSSS fellow with many fond memories. In a thought-provoking analogy, he described how BIGSSS is a complex ecological system and how every part of it plays an important role in the successful completion of the PhD, be it PhD colleagues, faculty, staff, or the curriculum.

The pandemic also forced us to think in new ways, after all, for some alumni it was more than four years since they had officially completed their doctorates. However, to enable all of our alumni

and their families, now spread across the world, to participate, we organized a hybrid format of Graduation Day for the first time. Three alumni attended the ceremony as online guests, and Jonathan Jansen's graduation address was broadcasted live from South Africa. Another innovation was that the graduation speeches were given by members of the faculty who delivered equally touching, humorous, and appreciative speeches as fellow doctoral students did in previous years.

As known from previous Graduation Days, the program was enlivened by musical performances by the Constructor University choir J-Capella and culminated in a festive reception. As in previous years, the event was held in the "Goldener Saal" of the Atlantic Grand Hotel in Bremen, which as always provided a great atmosphere and excellent catering.

The official part of Graduation Day ended in the traditional way. After a reception that provided space for happy reunions and conversations, alumni, fellows, faculty, and staff went out into Bremen's nightlife as one big group of old friends after the "Goldener Saal" had closed its doors.



Towards a Global Core Value System in Doctoral Education

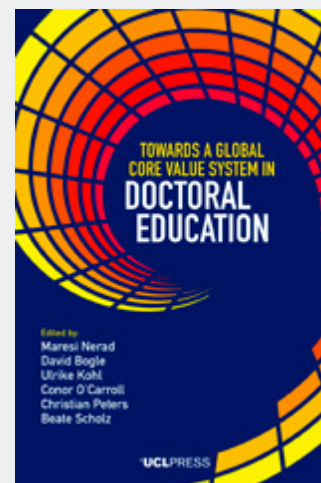
BIGSSS is continuously engaged in global discussions on the goals and structures of doctoral education and early career development in academia. The “Forces and Forms of Doctoral Education” conference in Hanover in 2019, formulated recommendations for globally oriented doctoral education. The resulting “Hanover Recommendations”, which have been widely circulated among policymakers, academics, and funding agencies worldwide, focus on:

- Establishing a global common value system for doctoral education
- Overcoming existing inequalities in access to doctoral education
- Embracing the diversity of cultures, people, and universities
- Promoting diverse forms of mobility
- Educating responsible and ethical thinkers

The “Forces and Forms of Doctoral Education” conference was funded by the VW Foundation and organized by BIGSSS, colleagues from University of Bremen, and an international group of distinguished higher education scholars.

“I expect a truly inclusive and international program, extending beyond global in focus, to meaningfully incorporating diverse perspectives and voices, especially from the Global South”

Prakashnee Govender, Affiliated PhD fellow, iaw



Nerad, M.; Bogle, D.; Kohl, U.; O'Carroll, C.; Peters, C.; Scholz, B. (Eds.) (2022): Towards a Global Core Value System in Doctoral Education: UCL Press. Open access (uclpress.co.uk/products/176624).

In September 2022, an open-access edited volume entitled “Towards a Global Core Value System in Doctoral Education”, co-edited by BIGSSS Managing Director Dr. Christian Peters, was published by the prestigious University College London Press. The anthology provides an assessment of changes and reforms in doctoral education since 2000. Recognizing the diversity of academic cultures and institutional systems worldwide, experts and early career researchers from the global North and South worked in interdisciplinary and intergenerational teams to develop guidelines for doctoral education. As a result of developing these guidelines, they learned from each other how to operate in a complex global context. The book advocates a core set of values for doctoral education, presented through seven key recommendations. It received a generally positive response and was featured in an editorial in the journal ‘Nature’ (19 January 2023), research results in peer-reviewed journals.



DAAD Graduate School Scholarship Program

Once again, a BIGSSS proposal on “Global Dynamics of Social Policy and Social Cohesion” (GSPSC) has been positively evaluated by the DAAD Graduate Scholars Program (GSSP). This is the second time after 2020’s GloWel proposal that BIGSSS has been successful in this funding line, and we are very pleased that this repeated achievement will allow us to build a new cohort of at least six active GSSP Fellows in the coming years.

GSPSC focuses on the question of how social policy and social cohesion are related on a global, regional, or national level. Comparative or transnational perspectives that address interdependencies between the Global South and North are especially welcome. Single country case studies may scrutinize the complex interlinkages between social policy and social cohesion.

In 2023 and 2024, two attractive fellowships (48 months) will again be offered annually, all four positions in the thematic intersection of the FGZ Bremen, Constructor University’s social sciences, the CRC 1342, the research training group SELF, and many research programs of SOCIUM colleagues. We are very optimistic about further strengthening doctoral education in this important focus area of Bremen’s social sciences. The program is coordinated by BIGSSS Academic Coordinator Dr. Judith Vey.

BIGSSS Computational Social Science Summer School on Social Cohesion

By Prof. Dr. Jan Lorenz & Arline Rave, March 2023

Research Incubators on Data-driven Modeling of Conflicts, Migration, and Social Cohesion

The third BIGSSS Computational Social Science Summer School took place in July 2022 in Groningen (The Netherlands). Originally planned for 2020, but postponed twice for well-known reasons, the 2022 CSS Summer School revolved around the topic of social cohesion.

The series is conceptualized as a research incubator and brought together experts in computational social sciences, experts on the topic, and junior scholars to advance research by using data-driven modeling approaches. As for previous BIGSSS-CSS summer schools, teams of young scientists and experienced scholars were

Social Cohesion

Maintaining and enhancing social cohesion is a key challenge for modern societies. It manifests in the treaties of the European Union as well as on the agendas of most political parties. The concept of cohesion is notoriously vague, has been criticized for being a “quasi-concept” that cannot be quantified, and often serves as something abstract to which any arbitrary policy can be related to. Nevertheless, its ubiquity as a policy goal makes attempting to quantify and analyze social cohesion a key challenge for public policymaking. From a network perspective, high social cohesion can be conceptualized as a balance of, on the one hand, close-knit, positive relations among individuals, and on the other hand, positive connectivity of society without antagonist sub partitions. From an attitude and norms perspective, cohesion can be conceived as the consensus of core societal norms and attitudes, even if subgroups in society are otherwise diverse and distinct. Both a high degree of network segregation, as well as a high degree of attitude polarization between subgroups would be indicators of a strong lack of societal cohesion, and could also be conceived as interrelated phenomena. Thus, conceptualization, measurement, as well as an understanding of generative social mechanisms, in favor or against social cohesion, are challenging and can greatly benefit from new digital data, computational methods, and the holistic spirit of computational social science.

formed to work through the entire research process on a specific topic. The project teams aim at publishing the resulting research results in peer-reviewed journals.

In Groningen, 36 junior and 17 international senior scientists from sociology, demography, and computational methods discussed a variety of aspects of social cohesion, and started their own projects applying computational methods on selected topics such as “Using Twitter to measure social cohesion and attitudes towards immigration” or “Down the rabbit hole: Polarization and information segregation on YouTube”.



The project work was complemented by lectures on theory and concepts of social cohesion, as well as lectures and hands-on workshops on methods of computational social sciences. Keynote talks were held by:

- Miranda Lubbers (Autonomous University of Barcelona, Spain) on “The invisible threads: A network approach to social cohesion”
- Jochem Tolsma (University of Groningen & Raboud University Nijmegen, The Netherlands) on “Residential segregation and political polarization”
- Mako Hill (University of Washington, USA) on “Collaborative production in online communities”

The summer school’s program was then rounded off with social events.



“During my time at BIGSSS, I hope to learn collectively with the fellows, explore research interests together, and engage in a lot of fruitful exchange over the coming years.”

Anh Tran, Affiliated PhD fellow, CRC 1342



Jan
Feb
Mar
Apr
May
Jun
Jul
Aug
Sep
Oct
Nov
Dec

PhD Defenses

Even though the COVID-19 pandemic caused significant delays in many research projects, resulting in fewer finished dissertations than usual, eight PhD Fellows have successfully defended their PhD theses in 2022. Congratulations!

Simone Tonelli

Jan 24

The Politics of Family Policy in a Global Perspective

Supervisors: Prof. Dr. Johannes Huinink, Prof. Dr. Carina Schmidt

Priyadarshani Premarathne

Jan 25

Job Quality and Quality of Life of Formal Sector Employees in Sri Lanka

Supervisors: Prof. Sonja Drobnič (PhD), Dr. Mandy Boehnke

Maïke Koschorreck

May 06

Chancengleichheit, herkunftsbedingte Risikolagen und der schulische Umgang mit (kultureller) Vielfalt. Eine empirische Studie zu Prozessen institutioneller Diskriminierung

Supervisors: Prof. Dr. Matthias Wingens, Dr. Margrit E. Kaufmann

Timm Fulge

May 13

Die politische Ökonomie der Hochschulbildung: Präferenzen, Ungleichheit, und Politikwandel

Supervisors: Prof. Dr. Kerstin Martens, Prof. Dr. Michael Windzio

Nico Blokker

Jun 28

Possibilities and Limits of Semi-Automatically Constructing Discourse Networks

Supervisor: Prof. Dr. Sebastian Haunss

Martín Cortina Escudero

Nov 13

Emerging Powers, Climate Change, and the Global Order: Analyzing the National Role Conceptions of Brazil, South Africa, India and China (BASIC)

Supervisors: Prof. Dr. Karen Smith Stegen, Prof. Dr. Peter Mayer

Jonathan Rosa

Dec 13

Social Representations and Social Media: Exploring Facebook and Shared Meanings of Migration among Filipino Migrants in Germany

Supervisors: Prof. Dr. Klaus Boehnke, Prof. Dr. Margrit Schreier

Audris Umel

Dec 16

Diverging Paths of Social Policy Development in Latin America States: A Case Study on Argentina and Mexico from the Colonial Times to the Early Post-World-War-II Period

Supervisors: Prof. Dr. Philip Manow, Prof. Dr. Delia González de Reufels

“The BIGSSS community offered me a group of colleagues to not only share doubts and fears related to working in academia, but a group of friends from all over the world that I am very grateful for.” Fabienne Müller, Affiliated PhD Fellows/ CRC 1342

Jan
Feb
Mar
Apr
May
Jun
Jul
Aug
Sep
Oct
Nov
Dec



Selected Publications by BIGSSS PhD and Postdoctoral Fellows

Bonvin, J.-M.; **Laruffa, F.** (2022): Towards a Capability-Oriented Eco-Social Policy: Elements of a Normative Framework. In *Social Policy and Society* 21 (3), pp. 484–495.

Breznau, N.; Rinke, E. M.; Wuttke, A.; **Nguyen, H. H. V.**; et al. (2022): Observing many researchers using the same data and hypothesis reveals a hidden universe of uncertainty. In *Proceedings of the National Academy of Sciences* 119 (44).

Canihac, H.; **Laruffa, F.** (2022): From an Ordoliberal idea to a Social-Democratic ideal? The European Parliament and the institutionalization of 'social market economy' in the European Union (1957–2007). In *Journal of Common Market Studies* 60 (4), pp. 867–884.

Druga, E. (2022): World Bank Intervention and Introduction of Social Health Insurance in Albania. In: F. Nullmeier, D. González de Reufels, H. Obinger (Eds.): *International Impacts on Social Policy*. Cham: Springer International Publishing (Global Dynamics of Social Policy), pp. 225–235.

Fischer, J.; **Polte, A.**; **Sternkopf, M.** (2022): Introduction of Long-Term Care Systems: The Nascent Diffusion of an Emergent Field of Social Policy. In: M. Windzio, I. Mossig et al. (Eds.): *Networks and Geographies of Global Social Policy Diffusion*. Cham: Springer International Publishing (Global Dynamics of Social Policy), pp. 139–167.

Gebbing, P.; Lattemann, C.; Michalke, S.; Kroschewski, T.; Robra-Bissantz, S. (2022): Kernkompetenz Empathie: digitale Service-Ökosysteme personennah gestalten. In *HMD Praxis der Wirtschaftsinformatik* 59 (5), pp. 1269–1280.

Gebbing, P.; Yang, X.; Lattemann, C.; Becker, F.; Flåten, B.-T.; Lahtinen, P.; Pilcicki, R.; Tønnessen, Ø. (2022): *Fostering Creativity in Digital Group Work. A Handbook for Individuals, Educators and Professionals*. 1. Auflage. Berlin: epubli.

Gottschall, K.; **Noack, K.**; Rothgang, H. (2022): Dependencies of Long-Term Care Policy on East–West Migration: The Case of Germany. In: F. Nullmeier, D. González de Reufels, H. Obinger (Eds.): *International Impacts on Social Policy*. Cham: Springer International Publishing (Global Dynamics of Social Policy), pp. 515–529.

Iturra, J.; Castillo, J. C.; Rufs Orellana, C. I.; Maldonado, L. (2022): La percepción de desigualdad económica y su influencia sobre la justificación de las diferencias de ingreso legítimas. In *Estud. Sociol.* 41 (122), pp. 303–346.

Kalyegira, J. (2022): Basic psychological needs satisfaction and psychological well-being of refugees in Africa. In *Discover Psychology* 2 (1).

Laruffa, F. (2022): Neoliberalism, Economization and the Paradox of the New Welfare State. In *European Journal of Sociology* 63 (1), pp. 131–163.

Laruffa, F. (2022): Re-thinking Work and Welfare for the Social-Ecological Transformation. In *Sociologica* 16 (1), pp. 123–151.

Laruffa, F. (2022): Studying the relationship between social policy promotion and neoliberalism. The case of social investment. In *New political economy*.

Laruffa, F. (2022): The dilemma of “sustainable welfare” and the problem of the future in capacitating social policy. In *Sustainability: Science, Practice and Policy* 18 (1), pp. 822–836.

Laruffa, F.; Martinelli, A. (2022): Neoliberal globalization, hegemonic crisis, and the struggle for a countermovement the case of the 'Responsible Business Initiative' in Switzerland. In *Globalizations*, pp. 1–16.

Laruffa, F.; McGann, M.; Murphy, M. P. (2022): Enabling Participation Income for an Eco-Social State. In *Social Policy and Society* 21 (3), pp. 508–519.

Miranda, D.; **Iturra, J.** (2022): La importancia de la invarianza métrica para la investigación en sociología. In *RevSoc* 37 (1).

Noack, K.; **Storath, G.-M.** (2022): Migrantische Arbeitskräfte in der formellen Altenpflege in Deutschland und Schweden. In *WSI* 75 (5), pp. 401–406.

Nuske, J. (2022): Approaching the legitimacy of self-appointed representatives: from responsiveness to reflexivity. In *Int Groups Adv* 11 (3), pp. 416–433.

Polte, A.; Haunss, S.; Schmid, A.; Carvalho, G. de; Rothgang, H. (2022): The Emergence of Healthcare Systems. In: M. Windzio, I. Mossig et al. (Eds.): *Networks and Geographies of Global Social Policy Diffusion*. Cham: Springer International Publishing (Global Dynamics of Social Policy), pp. 111–138.

Redeker, D.; Bernardes, M.; Davidian, G.; Hammond, E.; Baller, M.; Cazacu, L.; Cirolini, S.; Josephson, A.-A.; Recknagel, F. (2022): *Research Report: Mapping Policy Responses to the Covid-19 Misinfodemic (IPW Working Paper)*.

Richter, M. M. (2022): Innovationen als Wachstumsfaktor in der Transformation. Eine komparative Analyse von Ostdeutschland und Polen. In: *Transformation in Polen und Ostdeutschland. Voraussetzungen, Verlauf und Ergebnisse*. Harrassowitz Verlag, Wiesbaden, pp. 103–121.

	BIGSSS Research	Publications	80
Jan			
Feb		Richter, M. M. (2022): The Diversity of Actors in Reform Backsliding and Its Containment in the Ukrainian Hybrid Regime. In <i>PaG</i> 11 (1).	
Mar		Safuta, A.; Noack, K.; Gottschall, K.; Rothgang, H. (2022): Migrants to the Rescue? Care Workforce Migrantisation on the Example of Elder Care in Germany. In: J. Kuhlmann, F. Nullmeier (Eds.): <i>Causal mechanisms in the global development of social policies</i> . 1st ed. 2022. Cham: Springer International Publishing; Imprint Palgrave Macmillan (Springer eBook Collection), pp. 303–334.	
Apr		Schröder, T.; Speer, A.; Sachweh, P.; Groh-Samberg, O. (2022): Trust and compliance: Milieu-specific differences in social cohesion during the COVID-19 pandemic in Germany. In <i>Front. Sociol.</i> 7, p. 989831.	
May		Tecklenburg, R.; Boehnke, M. (2022): The role of kinship in bi-national couples: Intergenerational solidarity in Turkish-German families. In <i>Front. Sociol.</i> 7, p. 856178.	
Jun		Vorobeva, E. (2022): Intersectionality and Minority Entrepreneurship: At the Crossroad of Vulnerability and Power. In: L. P. Dana, N. Khachlouf et al. (Eds.): <i>Disadvantaged minorities in business</i> . This title was inspired by Ivan Light who coined the term “Disadvantaged minorities” in 1979. Cham: Springer International Publishing; Imprint Springer (Springer eBook Collection), pp. 225–235.	
Jul		Vorobeva, E. (2022): Introduction to this Book. In: L. P. Dana, N. Khachlouf et al. (Eds.): <i>Disadvantaged minorities in business</i> . This title was inspired by Ivan Light who coined the term “Disadvantaged minorities” in 1979. Cham: Springer International Publishing; Imprint Springer (Springer eBook Collection), pp. 1–7.	
Aug		Vorobeva, E. (2022): Overcoming the mobility bias in transnational entrepreneurship. In <i>Global Networks</i> .	
Sep		Vorobeva, E. (2022): The Context for Business in Syria. In: L. P. Dana, S. Aidin et al. (Eds.): <i>Understanding contexts of business in Western Asia. Land of bazaars and high-tech booms</i> , vol. 04. New Jersey: World Scientific (New Teaching Resources for Management in a Globalised World, volume 4), pp. 369–382.	
Oct		Vorobeva, E.; Jauhiainen, J. S.; Tammaru, T. (2022): Language, networks, and virtual transnationalism: The case of Russian speakers from Estonia living in Finland. In <i>International Migration</i> 60 (6), pp. 129–147.	
Nov			
Dec			

	BIGSSS Research	Publications	81
		<h2>Selected Publications by BIGSSS Alumni</h2>	
		Auffenberg, J.; Becka, D.; Evans, M.; Kokott, N.; Schleichen, S.; Braun, E. (2022): “Ich pflege wieder, wenn ...”. Potenzialanalyse zur Berufsrückkehr und Arbeitszeitaufstockung von Pflegefachkräften. Bremen: Arbeitnehmerkammer Bremen.	
		Axyonova, V.; Cenuşa, D.; Gawrich, A. (2022): International Negotiations and Domestic Change in the EU’s Eastern Neighborhood: Deconstructing Antidiscrimination Reforms in Moldova. In <i>East European Politics and Societies</i> 36 (2), pp. 378–398.	
		Axyonova, V.; Kohstall, F.; Richter, C. (Eds.) (2022): <i>Academics in exile. Networks, knowledge exchange and new forms of internationalization</i> . Bielefeld: transcript.	
		Beichert, T.; Boatcă, M.; Börner, S.; Büttner, S. M.; Deutschmann, E.; et al. (Eds.) (2022): <i>Sociology of Europeanization</i> . München, Wien: De Gruyter Oldenbourg (Sozialwissenschaftliche Einführungen, 3).	
		Breznau, N.; Rinke, E. M.; Wuttke, A.; Nguyen, H. H. V.; et al.: Observing many researchers using the same data and hypothesis reveals a hidden universe of uncertainty. In <i>Proceedings of the National Academy of Sciences</i> 119 (44).	
		Carvalho, G. de (2022): The World Bank and Healthcare Reforms: A Cross-National Analysis of Policy Prescriptions in South America. In <i>Social Inclusion</i> 10 (1).	
		Carvalho, G. de; Frisina Doetter, L. (2022): The Washington Consensus and the Push for Neoliberal Social Policies in Latin America: The Impact of International Organisations on Colombian Healthcare Reform. In: F. Nullmeier, D. González de Reufels, H. Obinger (Eds.): <i>International Impacts on Social Policy</i> . Cham: Springer International Publishing (Global Dynamics of Social Policy), pp. 211–224.	
		Cassells, E. D.; Carvalho, G. de; Frisina Doetter, L. (2022): The Colonial Legacy and the Jamaican Healthcare System. In: F. Nullmeier, D. González de Reufels, H. Obinger (Eds.): <i>International Impacts on Social Policy</i> . Cham: Springer International Publishing (Global Dynamics of Social Policy), pp. 89–103.	
		Deters, H.; Zardo, F. (2022): The European Commission in Covid-19 vaccine cooperation: leadership vs coronationalism? In <i>Journal of European Public Policy</i> , pp. 1–21.	
		Deutschmann, E. (2022): Was kosten Studienvisa? Eine global vergleichende Analyse. Europa-Universität Flensburg. Available online at https://www.ssoar.info/ssoar/handle/document/81138 .	

Jan	BIGSSS Research	Publications	82
Feb	Deutschmann, E.; Minkus, L.; Delhey, J. (2022): European Union: How Trump's Presidency In-creased Its Popularity in Europe. In: J. Dixon, M. J. Skidmore (Eds.): Donald J. Trump: The 45th U.S. Presidency and Beyond: International Perspectives. Washington: Westphalia Press, pp. 201–222.		
Mar	Deutschmann, E.; Recchi, E. (2022): 12 Europeanization via Transnational Mobility and Migration. In: S. M. Büttner, M. Eigmüller, S. Worschech (Eds.): Sociology of Europeanization. Berlin, Boston: De Gruyter Oldenbourg (Sozialwissenschaftliche Einführungen, 3), pp. 283–306.		
Apr	Deutschmann, E.; Recchi, E.; Vespe, M. (2022): Assessing Transnational Human Mobility on a Global Scale. In: S. Pötzschke, S. Rinken (Eds.): Migration Research in a Digitized World. Cham: Springer International Publishing (IMISCOE Research Series), pp. 169–192.		
May	Dochow-Sondershaus, S. (2022): Ethnische Nachbarschaftskomposition und die Entwicklung einwanderungsbezogener Sorgen in Zeiten starker Zuwanderung. In: H. Kruse, J. Teltemann (Eds.): Differenz im Raum. Wiesbaden: Springer Fachmedien Wiesbaden, pp. 171–194.		
Jun	Dochow-Sondershaus, S. (2022): Ideological polarization during a pandemic: Tracking the alignment of attitudes toward COVID containment policies and left-right self-identification. In <i>Frontiers in Sociology</i> 7.		
Jul	Ehrlich, U. (2023): The Association between Family Care and Paid Work among Women in Germany: Does the Household Economic Context Matter? In <i>Work, Employment and Society</i> 37 (1), pp. 117–136.		
Aug	Ehrlich, U.; Kelle, N.; Bünning, M. (2022): Pflege und Erwerbsarbeit. Was ändert sich für Frauen und Männer in der Corona-Pandemie? (dza aktuell / Deutscher Alterssurvey, 02). Berlin: Deutsches Zentrum für Altersfragen.		
Sep	Ehrlich, U.; Kelle, N.; Klaus, D.; Möhring, K. (2022): How did the COVID-19 pandemic impact the wellbeing of family care-givers? A longitudinal study of older adults in Germany. In <i>Ageing and Society</i> , pp. 1–18.		
Oct	Fischer, J. (2022): The social long-term care insurance model: comparing actor configurations across countries and time. In <i>Journal of International and Comparative Social Policy</i> 38 (2), pp. 93–110.		
Nov	Fischer, J.; Frisina Doetter, L.; Rothgang, H. (2022): Comparing long-term care systems: A multidimensional, actor-centred typology. In <i>Social Policy & Administration</i> 56 (1), pp. 33–47.		
Dec	Fischer, J.; Kim, H.; Frisina Doetter, L.; Rothgang, H. (2022): Social Long-Term Care Insurance: An Idea Travelling Between Countries? In: F. Nullmeier, D. González de Reufels, H. Obinger (Eds.): International Impacts on Social Policy. Cham: Springer International Publishing (Global Dynamics of Social Policy), pp. 435–447.		

Jan	BIGSSS Research	Publications	83
Feb	Fischer, J.; Polte, A.; Sternkopf, M. (2022): Introduction of Long-Term Care Systems: The Nascent Diffusion of an Emergent Field of Social Policy. In: M. Windzio, I. Mossig et al. (Eds.): Networks and Geographies of Global Social Policy Diffusion. Cham: Springer International Publishing (Global Dynamics of Social Policy), pp. 139–167.		
Mar	Gauditz, L. (2022): Opportunity of encounter: negotiating difference in the No Borders movement in Athens. In <i>Social Identities</i> 28 (1), pp. 19–40.		
Apr	Grigoryan, L.; Cohrs, J. C.; Boehnke, K.; van de Vijver, F.; Easterbrook, M. J. (2022): Multiple categorization and intergroup bias: Examining the generalizability of three theories of intergroup relations. In <i>Journal of Personality and Social Psychology</i> 122 (1), pp. 34–52.		
May	Grigoryan, L.; Jones, B. H.; Cohrs, J. C.; Boehnke, K.; Easterbrook, M. J. (2022): Differentiating Between Belief-Indicative and Status-Indicative Groups Improves Predictions of Intergroup Attitudes. In <i>Personality & social psychology bulletin</i> , 1461672221092852.		
Jun	Harris, E.; Römer, F. (2022): Contextual welfare chauvinism: Left-wing governments and immigrant welfare rights in Western Europe. <i>International European Journal Political Research</i> .		
Jul	Hericks, L.; Leiser, A. (2022): Moving from stated values to enacted efforts: Strategic leadership in higher education. In: Global Learning Council (GLC), Deutscher Akademischer Austauschdienst e.V. (DAAD) (Eds.): Digital Transformation of Higher Education - Global Learning Report 2022. With assistance of Global Learning Council (GLC). Berlin, pp. 11–16.		
Aug	Kapelle, N.; Nutz, T.; Tisch, D.; Schechtl, M.; Lersch, P. M.; Struffolino, E. (2022): My Wealth, (Y)Our Life Satisfaction? Sole and Joint Wealth Ownership and Life Satisfaction in Marriage. In <i>European Journal of Population</i> 38 (4), pp. 811–834.		
Sep	Kelle, N.; Ehrlich, U. (2022): Situation unterstützender und pflegender Angehöriger von Menschen mit Demenz (dza aktuell / Deutscher Alterssurvey, 04). Berlin: Deutsches Zentrum für Altersfragen.		
Oct	Klebe, L.; Klug, K.; Felfe, J. (2022): When Your Boss Is Under Pressure: On the Relationships Between Leadership Inconsistency, Leader and Follower Strain. In <i>Frontiers in psychology</i> 13, p. 816258.		
Nov	Klug, K.; Felfe, J.; Krick, A. (2022): Does Self-Care Make You a Better Leader? A Multisource Study Linking Leader Self-Care to Health-Oriented Leadership, Employee Self-Care, and Health. In <i>International journal of environmental research and public health</i> 19 (11).		
Dec	Kneuer, M.; Consten, M.; Schammann, H.; Kahle, P.; Wallaschek, S.; Ziegler, F. (2022): Claiming solidarity: A multilevel discursive reconstruction of solidarity. In <i>European Journal of Social Theory</i> 25 (3), pp. 366–385.		
	Kneuer, M.; Wallaschek, S. (2022): Framing COVID-19: Public Leadership and Crisis Communication By Chancellor Angela Merkel During the Pandemic in 2020. In <i>German Politics</i> , pp. 1–24.		

Jan	BIGSSS Research	Publications	84
Feb	Leiser, A. (2022): Psychological perspectives on participatory culture: Core motives for the use of political internet memes. In <i>J. Soc. Polit. Psych.</i> 10 (1), pp. 236–252.		
Mar	Lersch, P. M. ; Struffolino, E.; Vitali, A. (2022): Wealth in Couples: Introduction to the Special Issue. In <i>Eur J Population</i> 38 (4), pp. 623–641.		
Apr	Lierse, H.; Sachweh, P.; Waitkus, N. (2022): Introduction: Wealth, Inequality and Redistribution in Capitalist Societies. In <i>Social justice research</i> 35 (4), pp. 367–378.		
May	Minkus, L. ; Groepler, N.; Drobníč, S. (2022): The significance of occupations, family responsibilities, and gender for working from home: Lessons from COVID-19. In <i>PloS one</i> 17 (6), e0266393.		
Jun	Nutz, T.; Nelles, A.; Lersch, P. M. (2022): Who Opts Out? The Customisation of Marriage in the German Matrimonial Property Regime. In <i>Eur J Population</i> 38 (3), pp. 353–375.		
Jul	Polte, A.; Haunss, S.; Schmid, A.; Carvalho, G. de ; Rothgang, H. (2022): The Emergence of Healthcare Systems. In: M. Windzio, I. Mossig et al. (Eds.): <i>Networks and Geographies of Global Social Policy Diffusion</i> . Cham: Springer International Publishing (Global Dynamics of Social Policy), pp. 111–138.		
Aug	Recchi, E.; Ferrana, A.; Rodriguez Sanchez, A.; Deutschmann, E. ; Gabrielli, L.; Iacus, S.; Bastiani, L.; Spyrtatos, S.; Vespe, M. (2022): The impact of air travel on the precocity and severity of COVID-19 deaths in sub-national areas across 45 countries. In <i>Scientific reports</i> 12 (1), p. 16522.		
Sep	Redeker, D. ; Bernardes, M.; Davidian, G.; Hammond, E.; Baller, M.; Cazacu, L.; Cirolini, S.; Josephson, A.-A.; Recknagel, F. (2022): Research Report: Mapping Policy Responses to the Covid-19 Misinfodemic (IPW Working Paper).		
Oct	Waitkus, N. ; Wallaschek, S. (2022): Legitimate Wealth? How Wealthy Business Owners are Portrayed in the Press. In <i>Social justice research</i> 35 (4), pp. 404–435.		
Nov	Wallaschek, S. (2022): Foret, François, und Oriane Calligano (Hrsg.) (2020): European Values. Challenges and Opportunities for EU Governance. In <i>Polit Vierteljahresschr.</i> pp. 1–3.		
Dec	Wallaschek, S. ; Kaushik, K.; Verbalyte, M.; Sojka, A.; Sorci, G.; Trenz, H.-J.; Eigmüller, M. (2022): Same Same but Different? Gender Politics and (Trans-)National Value Contestation in Europe on Twitter. In <i>PaG</i> 10 (1), pp. 146–160.		
	Windzio, M.; Mossig, I.; Besche-Truthe, F. ; Seitzer, H. (Eds.) (2022): <i>Networks and Geographies of Global Social Policy Diffusion</i> . Cham: Springer International Publishing (Global Dynamics of Social Policy).		
	Wittmann, F. ; Roth, F.; Hufnagl, M.; Lindner, R.; Yorulmaz, M. (2022): Towards a framework for impact assessment for mission-oriented innovation policies. A formative toolbox approach. Fraunhofer Institute for Systems and Innovation Research.		

BIGSSS Research	Publications	85
<p>“I hope BIGSSS provides a network of exchange and support among the PhD students. With our current cohort, I am certain that it will deliver that.”</p> <p><small>Heiner Salomon, Affiliated PhD Fellows/ CRC 1342</small></p>		

Goodbyes

By Dr. Christian Peters, March 2023

In 2022 we also had to say goodbye to colleagues who had become dear to us all.

At the turn of the year, our much-loved colleague Patricia Abicht sadly left us to head south. Patricia (or 'Trish' as she was known to many) joined BIGSSS in June 2016 and has taught us many things over the years, such as firstly, what a real Northern Irish dialect sounds like. Secondly, that you should wait to decide on the best cake in the world until you have tasted some of Trish's. Third, and most importantly, how to work as an Admissions and Administration Officer in a highly professional, collegial, and incredibly reliable manner while remaining remarkably calm. I have never seen a stressed Trish! Admirable. We wish her all the best in her new role at the Technische Universität München.

Susan Westing-Kilian also left our team in 2022. Susan managed for many years the secretariat for our former Deanery Prof. Olaf Groh-Samberg and Prof. Sonja Drobnič. She clearly had had the 'green thumb' at BIGSSS and we recognize her departure not only because our plants look less happy. She has moved on to new tasks in the SOCIUM and – this is the good news – at least she is staying in the same house as us.



Jan
Feb
Mar
Apr
May
Jun
Jul
Aug
Sep
Oct
Nov
Dec

Imprint

**BIGSSS
Annual Report 2021**

BIGSSS
Bremen International Graduate
School of Social Sciences

Universität Bremen
Many-Somerville-Str. 9
28359 Bremen
Germany

www.bigsss-bremen.de

**Liabile in accordance
with the German
press law**

Dr. Christian Peters
Managing Director
cpeters@bigsss-bremen.de
+49 (421) 218 66400

Editors

Dr. Christian Peters
Managing Director

Arline Rave
Senior Coordinator of the
Deans' Office

Proofreading

Patricia Abicht
Coordination Officer

Design

Bas & Aer (www.basundaer.de)

Pictures

Lukas Klose (www.lukasklose.de),
Julian Fels (www.julianfels.com),
David Ausserhofer (www.ausserhofer.de),
Private Sources

Typeface

**Roc Grotesk
Regular, Medium**
Nikola Kostić & Zoran Kostić,
Kostic Type Foundry

Printing

buch.one (www.buch.one)

**BIGSSS Research
& Events**

New Faculty

New Staff

Best Paper Awards

Fellow Conference

Graduation Day

Book publication

GSSP

CSS Summer School

Defenses

Publications

Jan

Event | November 21–22, 2022

Feb

Fellow Conference on Intergenerational
Inequalities and the Contemporary
Family Setup

Mar

Apr

Event | July 4–15, 2022

May

Computational Social Science Summer
School on Social Cohesion

Jun

Jul

Publication | Open Access

Aug

Towards a Global Core Value System
in Doctoral Education

Sep

Oct

Nov

Dec



C>ONSTRUCTOR
UNIVERSITY